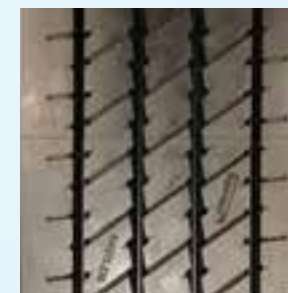


New Pattern

KH 211



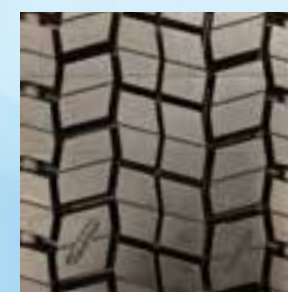
- Recommended for Buses or Trailer Position
- Better traction to ensure safety on the road
- Wider footprint for better stability
- Excellent for high mileage applications

Width (mm)	Depth (mm)
205	19.0
220	19.0
230	19.0
240	19.0
250	19.0

Allow 3% commercial tolerance



KM 811



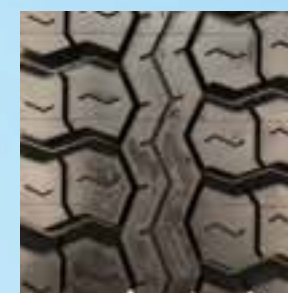
- Excellent block pattern for drive applications
- Used for maximum traction for demanding applications
- Good self-cleaning due to open shoulder design
- Transmits maximum engine power to the road

Width (mm)	Depth (mm)
220	18.0
230	18.0
240	18.0
250	18.0
260	18.0

Allow 3% commercial tolerance



KM 818



- Longitudinal ribs design with open groove design
- All season tread design for various applications
- Applicable to both Mix and Trailer
- Non directional for easy matching

Width (mm)	Depth (mm)
220	21.0
230	21.0
240	21.0
250	21.0

Allow 3% commercial tolerance



The latest pattern designs are part of GIB Rubber's effort to stay ahead of competition. They are catered for Trailer as well as Drive position axes.

The new patterns also come with our specifically developed Supercool compound, our latest generation compound build for more resistance as well as more mileage. More importantly they are also built for superior grip efficiency to allow your vehicle to stop shorter.

After all, only a good retread will really drive your operations efficiency to the next level.



TECHNICAL SPECIFICATION

KM 45



- Large tread pattern blocks
- Excellent mileage and traction
- Open lateral shoulder grooves improved wet traction
- Directional

Width (mm)	Depth (mm)
240	21.0
250	21.0
260	21.0

Allow 3% commercial tolerance



KM 71



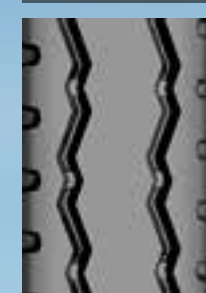
- Block pattern with sharp shoulder
- Open shoulder designs with deep sipes
- Very good self-cleaning with open shoulder block
- Non Directional

Width (mm)	Depth (mm)
230	19.0
240	19.0
250	19.0
260	19.0
295	14.7

Allow 3% commercial tolerance



KM 74



- Durable 3-rib deep tread application
- Suitable for harshest on/off road application
- Wide grooves are designed to reduce stone retention
- Non Directional

Width (mm)	Depth (mm)
203	17.0
210	17.0
220	17.0
230	17.0
240	17.0

Allow 3% commercial tolerance



KM 76



- Block pattern with offset shoulder block
- Good self-cleaning with open shoulder block
- Tough compound for all kinds of on/off roads
- Directional

Width (mm)	Depth (mm)
145	13.5
155	13.5
165	16.0
180	16.0

Allow 3% commercial tolerance



TECHNICAL SPECIFICATION

KM 87



- Improved traction
- Open shoulder grooves enhance traction on all road conditions
- Most suitable for drive axle of trucks
- Directional

Width (mm)	Depth (mm)
180	14.5
194	14.5
208	14.5
220	14.5
230	14.5
240	14.5
255	14.5

Allow 3% commercial tolerance



KT 1



- Ribbed tread with continuous rounded shoulders
- Smooth running
- High mileage per 32" performance
- Non Directional

Width (mm)	Depth (mm)
203	11.0
220	17.0
230	17.0
250	17.0
142	11.0
152	11.0
160	12.0
170	13.0
180	13.0
190	13.0
194	13.0
200	13.0
210	14.0
215	14.0
230	15.0

Allow 3% commercial tolerance



GR 1



- Exceptional traction design
- Excellent cut resistance on sand and stone surface
- Non Directional

Width (mm)	Depth (mm)
195	14.5
203	15.0
212	16.0
218	16.0
230	16.0
240	17.0
250	17.0

Allow 3% commercial tolerance



GR 78



- Extra deep tread for severe and rocky surfaces
- Excellent traction, stability and comfortable ride
- Suitable for underground mines, open pits and quarries
- Non Directional

Width (mm)	Depth (mm)
265	29.5
305	29.5
360	35.0
385	35.0
405	35.0
628	34.5

Allow 3% commercial tolerance



KSRL



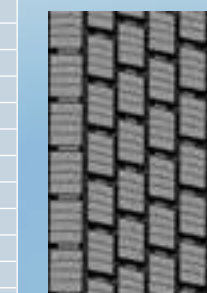
- Good transmission of traction forces particularly on unpaved surfaces
- Resistant to tears and cuts due to specially formulated compound
- Highly recommended for high propulsion power vehicles
- Non Directional

Width (mm)	Depth (mm)
230	21.5
240	21.5
250	21.5
260	21.5
270	21.5

Allow 3% commercial tolerance



KW 55



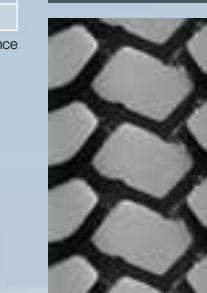
- Block pattern for all seasons including winter
- Excellent grip during winter and wet conditions
- Excellent mileage and fuel savings
- Non Directional

Width (mm)	Depth (mm)
120	11.0
127	11.0
135	11.0
142	11.0
152	11.0
160	12.0
170	13.0
180	13.0
190	13.0
194	13.0
200	13.0
210	14.0
215	14.0
230	15.0

Allow 3% commercial tolerance



GR 11



- Deep tread pattern and excellent lateral and longitudinal traction in extreme conditions
- Exceptional traction design
- Excellent cut resistance on sand and stone surfaces
- Non Directional

Width (mm)	Depth (mm)
670	72.0
620	65.0

Allow 3% commercial tolerance



GRP



- Excellent traction on all surfaces, on and off highway
- Exceptional casing durability
- Non Directional

Width (mm)	Depth (mm)
360	30.0
400	30.6

Allow 3% commercial tolerance

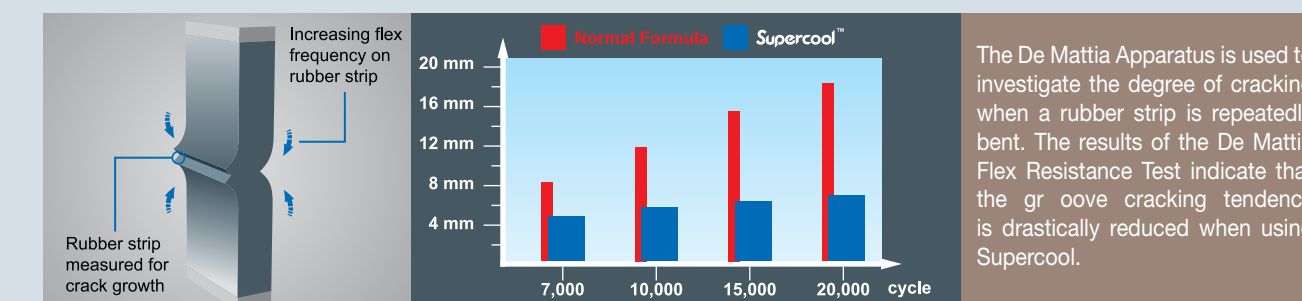


SUPERIOR FUNCTIONALITY

Why can you trust Supercool premium pre-cured tread to give outstanding performance and keep you safe on the road? Take a look at the unique Supercool features.

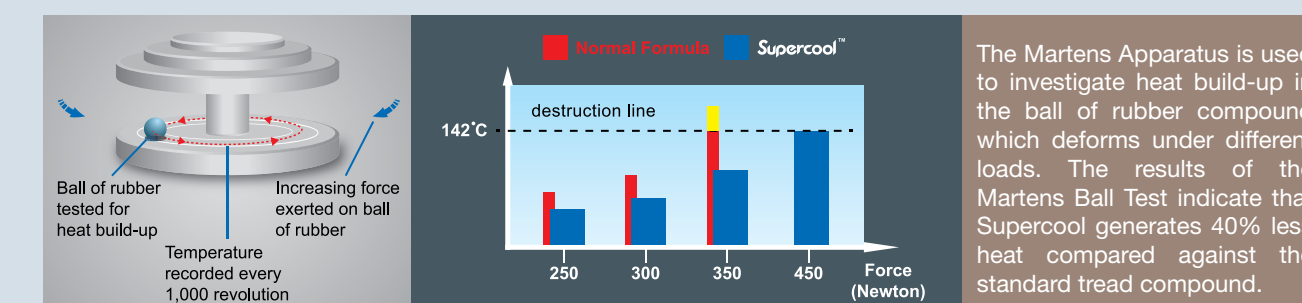


Flex Resistance Test



The De Mattia Apparatus is used to investigate the degree of cracking when a rubber strip is repeatedly bent. The results of the De Mattia Flex Resistance Test indicate that the groove cracking tendency is drastically reduced when using Supercool.

Heat Build-up Test



The Martens Apparatus is used to investigate heat build-up in the ball of rubber compound which deforms under different loads. The results of the Martens Ball Test indicate that Supercool generates 40% less heat compared against the standard tread compound.

Thanks to revolutionary heat dispersion technology, Supercool has been proven to run up to 40% cooler than a standard pre-cured treads. This prevents sudden and premature tyre blowouts and ensures your safety as the truck driver and also the safety of your vehicle. With up to 20% higher resistance against chipping than its predecessor, Supercool also has enhanced resistance against punctures and cuts. The pre-cured tread is less easily damaged and tread life is extended. Its anti-avulsion properties are another factor in its impressive safety record. Supercool's specially formulated compound is made using cutting edge German technology, resulting in consistently excellent road performance and minimal downtime in fleet maintenance.





GIB Rubber has been providing outstanding products and services to over 60 countries worldwide since its inception. We develop, manufacture and market rubber and rubber-related compounds such as technical, retread, and tyre compounds; and tyre retreading services. In addition, we also offer consultancy services in compound development, mixing and retreading to our customers.

Our growth has been exceptional since we began business in 1990. Today, we have established manufacturing plants domestically throughout East and West Malaysia, and internationally including China and Australia. On top of that, we also have distribution offices and warehousing facilities worldwide to serve our customers better.

At GIB Rubber, we strongly believe that nothing is more important than LIFE. That is why we continuously offer the highest quality rubber compounds and rubber-related products and services thanks to our continuous investment in the latest technology and innovations and technical expertise.

Using a consistently high quality, high performance retread considerably lowers the risks of a life-threatening accident occurring. That's the reason why thousands of truck drivers in over 60 countries around the world daily rely on Supercool to get them to their destinations and back home again safely.



GOODWAY RUBBER INDUSTRIES SDN BHD (147222-D)
(Subsidiary of Goodway Integrated Industries Berhad, a Malaysian Public-listed Company)

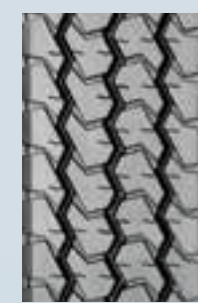
Unit 3-5-9, Level 5, Tower 3, UOA Business Park,
Jalan Pengaturcara U1/51A, Kawasan Perindustrian Temasya,
40150 Shah Alam, Selangor Darul Ehsan.
Tel : +60 3 5567 9986
Fax : +60 3 5569 9916
Email : marketing@gibworld.com
Website : www.gibworld.com



Supercool
Engineered For Safety

TECHNICAL SPECIFICATION

KH 14



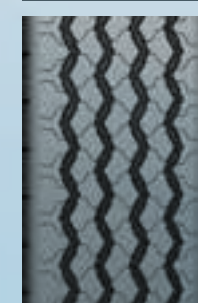
- Block-tyre tread with closed shoulders
- Good straight-running stability
- Good traction on wet and dry surfaces
- Non Directional

Width (mm)	Depth (mm)
100	8.0
110	8.0
120	10.0
127	10.0
140	11.0
150	13.0
160	13.0
170	13.0
180	14.0
194	15.0
200	16.0

Allow 3% commercial tolerance



KH 27



- Ribbed tread with continuous round shoulder
- For short and long haul range operations
- Smooth running and high mileage performance
- Non Directional

Width (mm)	Depth (mm)
120	12.2
130	13.0
140	13.0
150	14.0
160	14.0
170	14.0
180	14.5
188	14.5
194	15.5
203	15.5
210	15.5
215	15.5
220	15.5
230	15.5
240	15.5
250	15.5

Allow 3% commercial tolerance



KH 34



- Longitudinal ribs with closed shoulders
- Good performing all rounder on commercial vehicles
- Good self-cleaning due to open tread design
- Non Directional

Width (mm)	Depth (mm)
180	15.0
195	15.5
203	15.5
210	15.5
220	15.5
230	15.5
240	15.5
250	15.5
260	15.5
270	15.5

Allow 3% commercial tolerance



KH 52



- Longitudinal ribs in the centre with solid blocks and rounded shoulder
- For short and long-range operations, mainly on paved roads
- All-season tread
- Non Directional

Width (mm)	Depth (mm)
180	16.0
194	16.0
203	17.0
215	17.0
230	17.0

Allow 3% commercial tolerance



KH 25



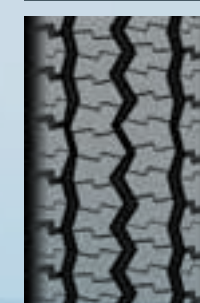
- Longitudinal ribs with closed shoulders
- All-position tread design
- Excellent mileage performance, especially on trailing axles
- Non Directional

Width (mm)	Depth (mm)
210	15.5
220	15.5
240	15.5

Allow 3% commercial tolerance



KH 28



- Smooth running
- Good transmission of traction forces due to distinctive sipes
- Fuel-savings due to low-rolling resistance
- Non Directional

Width (mm)	Depth (mm)
194	19.0
203	19.0
210	19.0
220	19.0
230	19.0
240	19.0
250	19.0
262	19.0

Allow 3% commercial tolerance



KH 42



- Good transmission of traction forces on wet and dry roads
- Good self-cleaning due to open shoulders
- All-season tread
- Non Directional

Width (mm)	Depth (mm)
194	16.5
204	16.5
215	16.5
220	16.5
230	16.5
250	16.5

Allow 3% commercial tolerance



KH 83



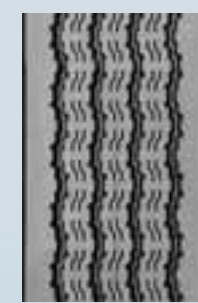
- Longitudinal ribs with closed shoulders
- All-position tread design
- Excellent mileage performance, especially on trailing axles
- Non Directional

Width (mm)	Depth (mm)
210	14.0
230	14.0
245	15.0

Allow 3% commercial tolerance



KH 86



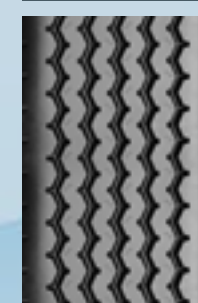
- Directionally stable
- Smooth running
- Specially designed to provide fuel-saving and low-rolling resistance
- Non Directional

Width (mm)	Depth (mm)
180	12.0
194	12.0
203	12.0
215	12.0
220	12.0
230	12.0
250	13.0

Allow 3% commercial tolerance



KH 90W



- Longitudinal rib design with closed shoulders and wings
- Low stress on casing due to minimal tread movement and cool-running compound
- Good straight-running stability
- Non Directional

Width (mm)	Depth (mm)
295	14.7

Allow 3% commercial tolerance



KH 95W



- Longitudinal ribs with closed shoulders and wings
- Low stress on casing due to minimal tread movement and cool-running compound
- Good straight-running stability
- Non Directional

Width (mm)	Depth (mm)
287	14.5
295	14.5
305	14.5

Allow 3% commercial tolerance



KL 63



- Good transmission of traction forces particularly on unpaved surfaces
- Resistant to tears and cuts due to specially formulated compound
- Highly recommended for high propulsion power vehicles
- Non Directional

Width (mm)	Depth (mm)
210	22.0
220	22.0
230	22.0

Allow 3% commercial tolerance



Supercool
Engineered For Safety

TECHNICAL SPECIFICATION

KH 88



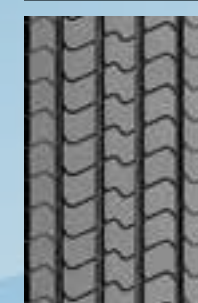
- Longitudinal rib design with closed Shoulders
- Good traction on wet and dry roads due to distinct sipes
- Grooves designed to resist stone penetration and casing damage
- Non Directional

Width (mm)	Depth (mm)
180	15.0
194	15.0
200	16.0
205	16.0
210	16.0
220	16.0
230	16.0
240	16.0
250	16.0

Allow 3% commercial tolerance



KH 91



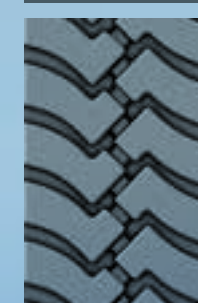
- For long-range operation
- Straight-line circumferential grooves for good water evacuation
- Good mileage performance
- Non Directional

Width (mm)	Depth (mm)
176	9.5
194	9.5
203	9.5
210	9.5
215	9.5
220	9.5

Allow 3% commercial tolerance



KL 60



- Good transmission of traction forces
- Very good self-cleaning due to open tread design
- Cut and tear resistant due to specially formulated compound
- Non Directional

Width (mm)	Depth (mm)
140	12.0
150	12.0
160	13.0
170	14.0
180	16.5
185	16.5
190	16.5
195	16.5
200	17.0
215	18.0
220	19.0
230	19.0
240	19.0
250	21.0

Allow 3% commercial tolerance



KL 64



- Specially adapted compound helps prevent cuts and damage to casing
- Good transmission of traction forces particularly on unpaved surfaces
- Well suited for high propulsion power vehicles
- Non Directional

Width (mm)	Depth (mm)
198	25.0
205	25.0
220	25.0
230	25.0
240	25.0
250	25.0
270	32.0
340	30.0

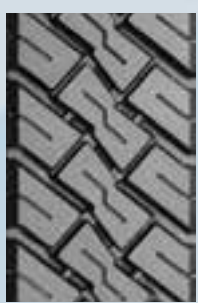
Allow 3% commercial tolerance



Supercool
Engineered For Safety

TECHNICAL SPECIFICATION

KL 65



- Good transmission of traction forces particularly on unpaved surfaces
- Resistant to tears and cuts due to specially formulated compound
- Highly recommended for high propulsion power vehicles
- Non Directional

Width (mm)	Depth (mm)
210	22.0
220	22.0
230	22.0

Allow 3% commercial tolerance



KM 16



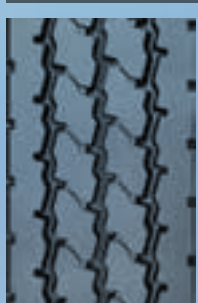
- Longitudinal block tyre tread with open shoulders
- Straight-running stability due to longitudinal treads
- Good traction and running properties
- Non Directional

Width (mm)	Depth (mm)
130	12.0
140	13.0
150	14.0
160	15.0
170	16.0
180	16.0
190	17.0
203	17.0
215	17.0

Allow 3% commercial tolerance



KM 36



- Centre staggered large blocks designed to reduce noise with excellent traction in dry and wet road conditions
- Compounded with anti-cutting and chipping properties to enhance durability
- Deep tread design for longer mileage
- Non Directional

Width (mm)	Depth (mm)
220	19.0
240	19.0
250	19.0
260	19.0

Allow 3% commercial tolerance



KM 39



- Longitudinal block-type tread with open shoulders
- Recommended for short-range operation
- Very good self-cleaning as a result of open tread
- Non Directional

Width (mm)	Depth (mm)
194	17.0
203	17.0
220	17.0
230	17.0
240	20.0
250	20.0

Allow 3% commercial tolerance



KM 15



- Robust tread with very large contact area
- Good transmission of traction forces particularly on unpaved surfaces
- Very good self-cleaning due to open-shoulder design
- Non Directional

Width (mm)	Depth (mm)
130	12.0
140	12.0
150	12.0
160	13.0
168	13.0
180	15.0
194	15.0
203	15.0
218	15.5
230	16.0

Allow 3% commercial tolerance



KM 32



- Highly resistant to lateral shearing forces due to rounded shoulders
- Directionally stable due to closed shoulders
- Good transmission of traction forces due to solid block in centre of tread
- Non Directional

Width (mm)	Depth (mm)
180	16.0
194	16.5
203	16.5
210	16.5
215	16.5
220	16.5
230	16.5
240	16.5
250	16.5

Allow 3% commercial tolerance



KM 38



- Good self-cleaning with open shoulder block
- Resistant to cuts and tears due to specially formulated compound
- Excellent grip on wet surfaces
- Non Directional

Width (mm)	Depth (mm)
230	18.5
240	18.5
250	18.5
260	18.5

Allow 3% commercial tolerance



KM 44E



- Suitable for all-weather use
- Good transmission of traction forces on wet and dry roads
- Good self-cleaning due to open shoulder design
- Non Directional

Width (mm)	Depth (mm)
200	21.0
210	21.0
220	21.0
230	21.0
240	21.0
250	21.0

Allow 3% commercial tolerance



Speedflex Cushion Gum